

Contrasting Metabolic Patterns Associated with Acute and Chronic Restraint Stress in Sprague Dawley Rats: A ¹H-NMR-Based Metabolomics Study

Sanjay Singh¹, Sukanya Tripathy¹, Atul Rawat^{1,2}, Durgesh Dubey^{1,2}, Sarfraj Ahmad Siddiqui¹, Rajesh Ugale⁴, Dinesh Kumar², Anand Prakash^{3*}

¹Department of Biotechnology, Babasaheb Bhimrao Ambedkar University, Lucknow, India

²Centre of Biomedical Research, Lucknow, India

³Department of Biotechnology, Mahatma Gandhi Central University, Bihar, India

⁴Department of Pharmaceutical Sciences, Rashtrasant Tukadoji Maharaj Nagpur University, Nagpur, India

*** Author for Correspondence**

Anand Prakash: anandprakash@mgcub.ac.in

KEYWORDS: Metabolomics, NMR, Metabolic Patterns, Restrained Stress, Behavioural Metabolomics.

ABBREVIATIONS: NMR-Nuclear Magnetic Resonance; CPMG-Carr–Purcell–Meiboom–Gill; AUROC-Area under the ROC curve; PCA-Principal Component Analysis; PLS-DA-Partial Least Squares Discriminant Analysis; RS-Restraint stress; AS-Acute stress; CS-Chronic stress.

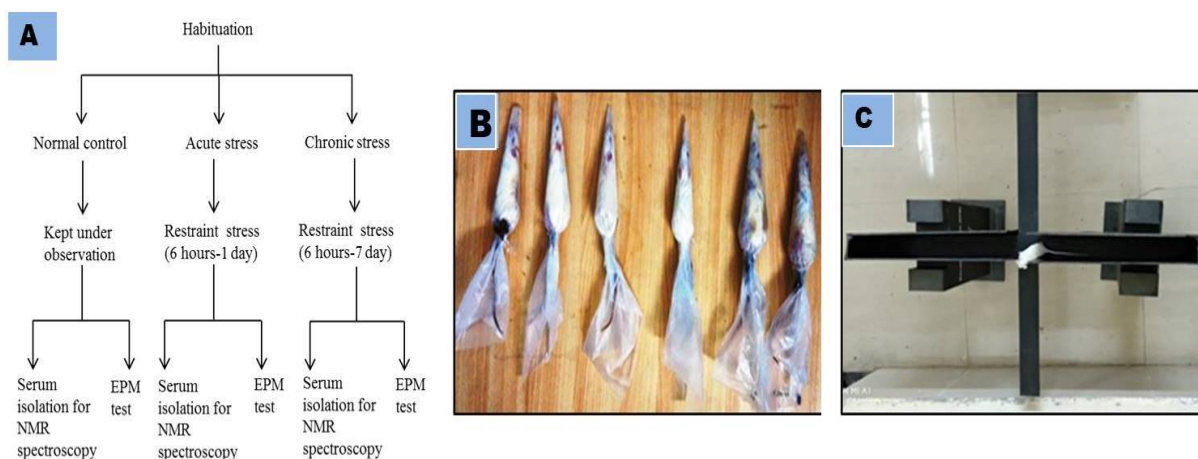


Figure S1: (A) represents the protocol used in the study. (B) represents the restraint stress given in plastic cone. (C) animals were tested on the EPM to know the effect of stress duration on the anxiety.

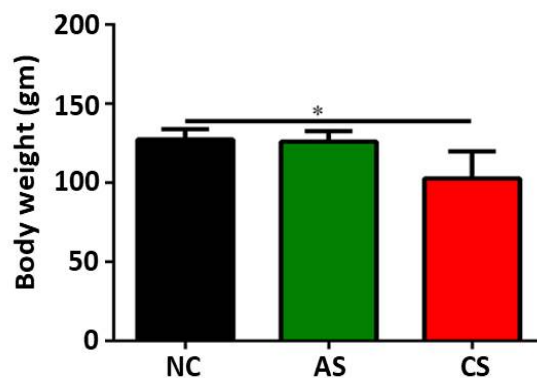


Figure S2: represents the effect of AS and CS on the body weight of animals. CS grouped animals showed significant decreased body weight ($p < 0.05$) as compared to the NC and AS group while no change was observed in between the NC and AS grouped animals ($p > 0.05$).

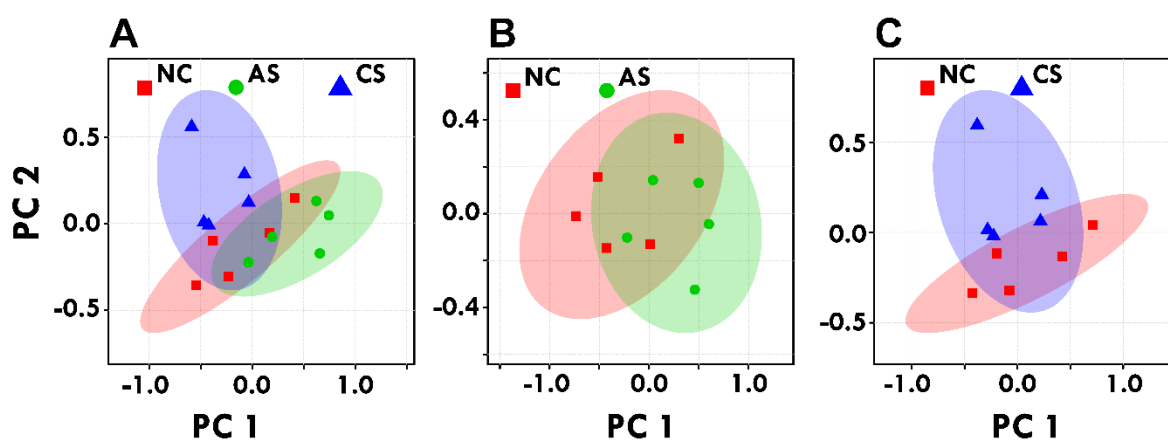


Figure S3: (A) Combined 2D PCA score plot comprising of all 3 groups NC, AS and CS. (B) and (C) Pairwise 2D PCA score plot of AS and CS with the NC respectively. Derived from 1D ^1H NMR CPMG spectra of serum samples.

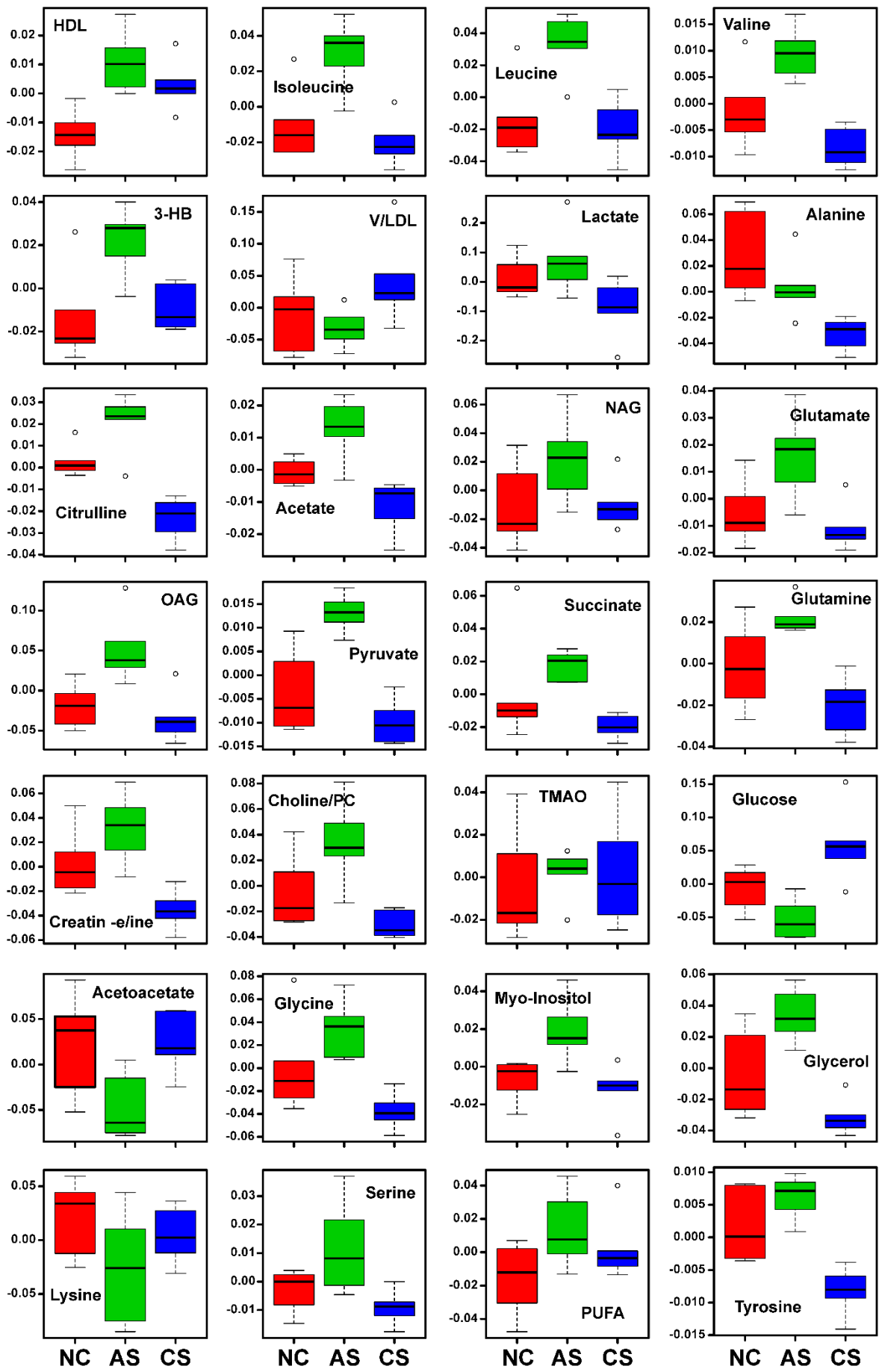


Figure S4: Box-whisker plots of metabolites that were significantly perturbed in AS and CS with respect to the Control group derived from 1H NMR CPMG spectra.

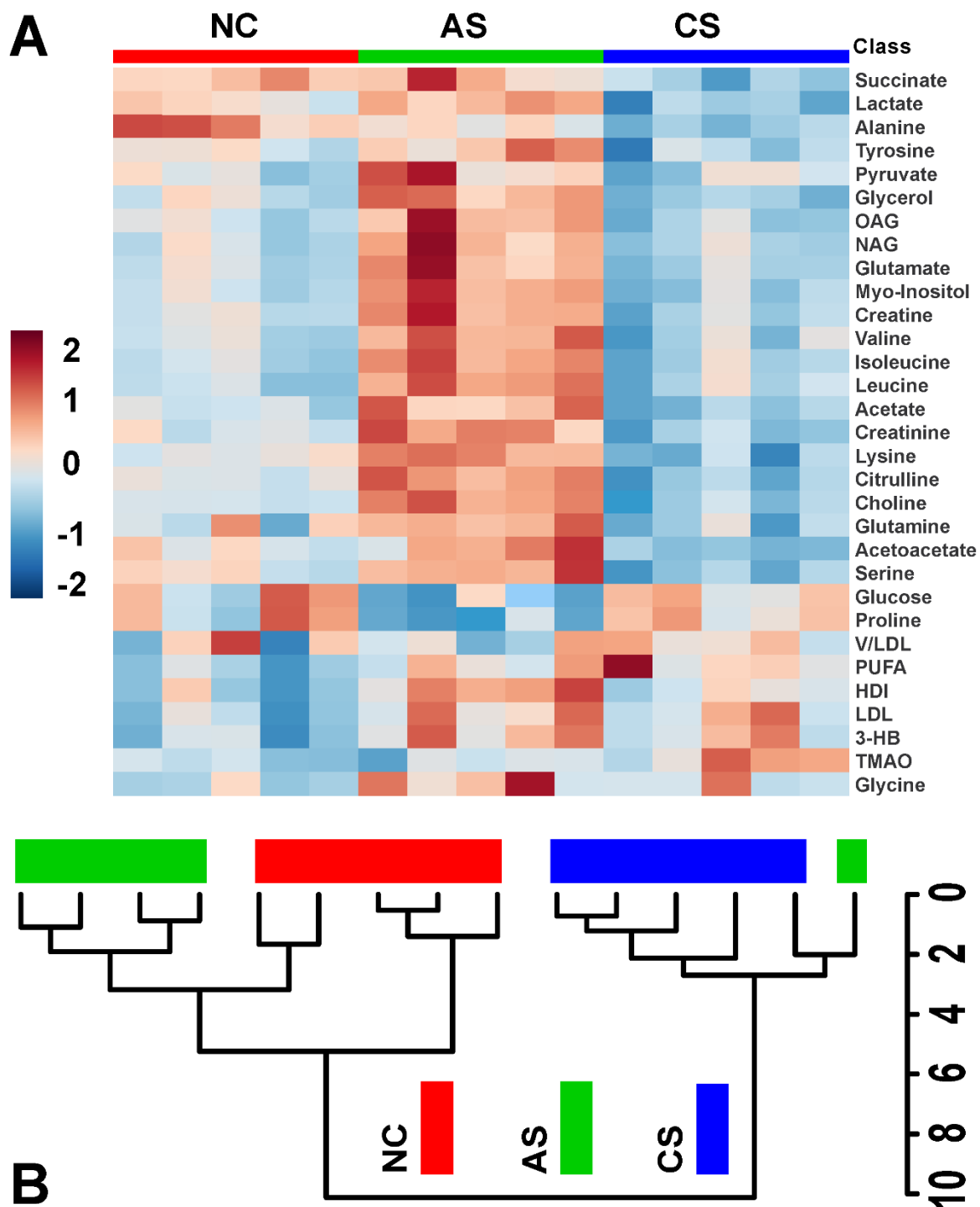


Figure S5: (A) Heat map of statistically significant metabolites in between Acute and Chronic -stress groups with respect to Control group as derived from CPMG ^1H NMR Spectra. Red=elevated; Cyan=reduced. Each column represents a sample, and each row represents a metabolite. (B) Hierarchical Clustering Analysis The dendrogram of control, acute and chronic -stress groups.