

## Supplementary Information

### Resveratrol loaded polymeric micelles for theranostic targeting of breast cancer cells

Authors: Yiota Gregoriou<sup>1,2,3\*</sup>, Gregoria Gregoriou<sup>1</sup>, Vural Yilmaz<sup>1</sup>, Konstantinos Kapnisis<sup>4</sup>, Marianna Prokopi<sup>4</sup>, Andreas Anayiotos<sup>4</sup>, Katerina Strati<sup>1</sup>, Nikolas Dietis<sup>5</sup>, Andreas I. Constantinou<sup>1</sup> and Chrysafis Andreou<sup>2,3\*</sup>

<sup>1</sup> Department of Biological Sciences, Faculty of Pure and Applied Sciences, University of Cyprus, Nicosia, Cyprus

<sup>2</sup> *Department of Electrical and Computer Engineering* University of Cyprus, Nicosia, Cyprus

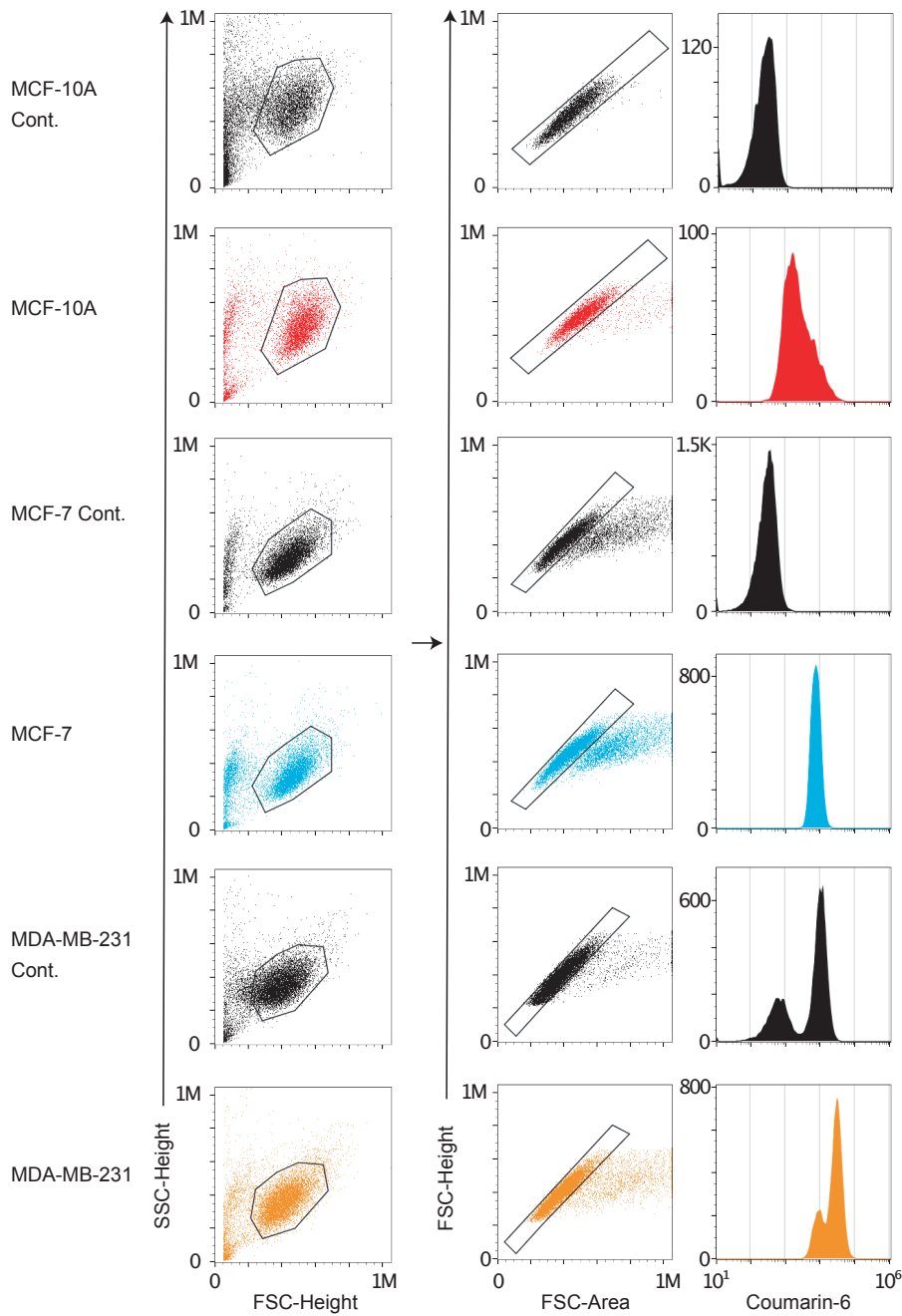
<sup>3</sup> Emphasis Research Centre, University of Cyprus, Nicosia, Cyprus

<sup>4</sup> Department of Mechanical Engineering and Material Science and Engineering, Cyprus University of Technology, Limassol, Cyprus

<sup>5</sup> Medical School University of Cyprus, Nicosia, Cyprus

\* Corresponding Author: Yiota Gregoriou, Laboratory of Cancer Biology and Chemoprevention, Department of Biological Sciences, Faculty of Pure and Applied Sciences, University of Cyprus, P.O. Box 20537, 1678 Nicosia, Cyprus. E-mail: [gregoriou.panayiota@ucy.ac.cy](mailto:gregoriou.panayiota@ucy.ac.cy)

\* Corresponding Author: Chrysafis Andreou, Department of Electrical and Computer Engineering, University of Cyprus, P.O. Box 20537, 1678 Nicosia, Cyprus. E-mail: [andreou.chrysafis@ucy.ac.cy](mailto:andreou.chrysafis@ucy.ac.cy)



**Figure S1. Representative FACS dot plots of gating strategy.** Mean fluorescence intensity (MFI) of Coumarin 6 for all cell lines tested in the one-hour treatment group. The population of cells was detected depending on their size and complexity (FSC-SSC gate) and later the doublets were excluded (FSC-Height/FSC-Area gate). The Flow cytometric data from single cells is displayed as histograms.

P-value			
MDA-MB-231			
	24 h	48 h	72 h
0.25 µg/ml	ns	ns	0.0113
0.50 µg/ml	ns	ns	0.0003
1.2 µg/ml	ns	0.0001	<0.0001
2.5 µg/ml	<0.0001	<0.0001	<0.0001

P-value			
MCF-10A			
	24 h	48 h	72 h
0.25 µg/ml	ns	ns	ns
0.50 µg/ml	ns	ns	ns
1.2 µg/ml	ns	ns	0.0283
2.5 µg/ml	ns	ns	ns

P-value			
MCF-7			
	24 h	48 h	72 h
0.25 µg/ml	ns	0.0098	0.006
0.50 µg/ml	0.0016	0.0036	0.0002
1.2 µg/ml	0.0006	<0.0001	<0.0001
2.5 µg/ml	<0.0001	<0.0001	<0.0001

Table S1: P values of MCF-10A, MCF-7 and MDA-MB-231 cell lines. The values were calculated by the one-way ANOVA test and at the 0.05 level were considered statistically significant.